

Arti-facts

The Newsletter of the
Idyllwild Area Historical Society

Volume V Issue 1

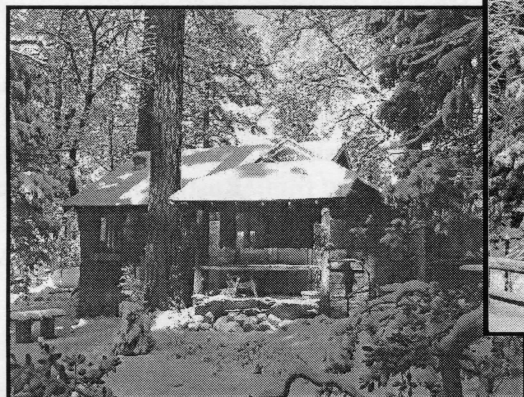
Spring 2005

Preserving the History of Idyllwild and Neighboring Communities in the San Jacinto Mountains

Our Weather Is Always Making History!

The Snows of January 2005

Photos by Carolyn Levitski



January soaks forest, sets record for rainfall – piles up snow

January departs as a distinctive month in the history of this area. It was one of the wettest on record and one of the most varied.

During the month 17.61 inches of precipitation were recorded at the Idyllwild ranger station. Because of the high temperatures

most of the snow fell above 9,000 feet. However, on Jan. 28 a snow arrived and blanketed the mountains to below 3,500 feet. Temperatures that night dropped to 9 degrees and there were four inches of snow in Idyllwild.

The big storm, Friday through Sunday, dumped 9.33 inches of rain at the ranger station (10.17" at Pine Cover) and snow that fell Tuesday evening added .46". Season total is now 24.53", compared to 15.94 inches this time last year.

*Idyllwild Town Crier
January 31, 1969*

Idyllwild Weather Lines for February

Total precipitation: 8.43 inches.

On February 6 there were 11 inches of snow on the floor of the valley.

The maximum reading for the month was 62 degrees on the 26th; the minimum 18 degrees on the 7th and 12th.

The mean maximum for the month 55 degrees; the mean minimum 31.32.

Mr. A.E. Wood of Idyllwild has been taking daily observations during Mr. Symmes visit to Hemet.

*The Hemet News
March 3, 1905*

March

Under normal conditions March is our wettest month. It is also the last month when heavy snows cover the mountains. If 1984 is indeed drier than last year, there may be more sunny days and a few buds.

Wildflowers will begin to appear in nearby Borrego Valley.

By this time most of the waterfowl wintering on the Salton Sea and Lake Hemet will have headed north. If not, look for a drastic change in spring weather.

The Emox 1984 Almanac

Mountain News Springtime on the Heights

The last snows much delayed the coming of spring upon the mountain this year, but the first warm days of the past week have of a sudden robed winter's nakedness with all the luxuriant glory of spring.

In Strawberry Valley, the Kelloggs have burst into delicate tassel and leaf. The wild lilies, white buckthorn and manzanita blossoms now scent the air; and the wild violets, cream colored wall flowers, ground pinks, sun cups, baby blue eyes and snow plants already lighten the canyons with their blossoms.

*The Hemet News
Spring 1905*

The 2004-2005 year is on track to be another record breaking year. Here are the statistics through early March....

Moisture in inches

To date this season (Idy): 35.87
To date this season (PC): 35.17
To date last season (Idy): 10.64
Total last season (Idy): 16.90

Snow in inches

To date this season (Idy): 28.50
To date this season (PC): 45.40
To date last season (Idy): 14.25
Total last season (Idy): 19.62

OFFICERS

President
Vice President Carolyn Levitski
Secretary Marcia Donnell
Treasurer Bob Smith

DIRECTORS

Rita Caldwell
Kay Cenicerros
Charlene Chindlund
Joe Hart
Nanci Killingsworth
Shirl Reid, Asst. Curator
Adele Voell
Lynn Voorheis

STAFF

Lynnda Hart, Curator & Museum Director

ADVISORY BOARD

Harry Bubb, Kay Cenicerros,
Craig Coopersmith,
Walter Parks, Kent Steele

COMMITTEE CHAIRS

Operations Manager Richard Levitski
Office PC System Shirl Reid
Home Tour Lynnda Hart
Newsletter Editor Marcia Donnell
Newsletter Layout Terry Casella
Membership Shirl Reid
Website Francoise Frigola
Hospitality Linda and Larry
Turner
Oral History Lynnda Hart
Oral History Video Carolyn Levitski
Research Bob Smith
Lynnda Hart
Photo Album Nancy Harrison
Field Trips

Indie Film Premiere in Idyllwild

On Saturday, February 19 at 9:00 p.m. "Cabin 6", an independent film produced and directed by Mike McCaffrey of Woman Lake Pictures had its premiere showing at the Rustic Theater in Idyllwild.

"Cabin 6" is a 25 minute short film produced in four days in Idyllwild last October. The story, written by Mark E. McCann, an Arkansas police officer, follows Don and Barbra Williams as they spend a few days in a remote cabin for their anniversary, a gift from their daughter. Unbeknownst to their daughter however, Don and Barbra are filing for divorce. The only mutual feelings between them are those of hostility and bitterness. When Barbra finds a journal left behind by previous visitors she and Don share in the memories of others and come to realize the love they lost may only need to be rekindled. The music score for the film was written by Chad Rehmann.

IAHS curator, Lynnda Hart was instrumental in coordinating several historic buildings and cabins for use in the film and the Atipahato Lodge and the Fern Valley Inn were two of the businesses assisting in the production. Even the IAHS raffle bear has an appearance in the film. Rustic Theater owners Ken and Eva Gioeli generously offered their theater for the free premiere.

To date, Cabin 6 has been submitted to several film festivals in Los Angeles and across the country.

Bear Winner



Photo by Bob Smith

Carolyn Prosi of San Diego is the winner of the raffle bear contest, a three-month long, successful fundraiser for IAHS. The bear, created and carved by The Mantle Carver, was on display in a variety of locations and proved to be a conversation piece wherever he went.

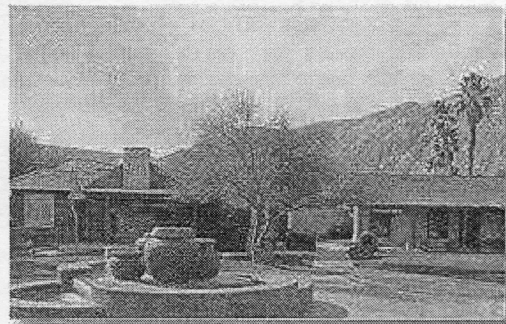
Upcoming Field Trips

Wednesday, March 23

Two outings are planned for this daylong event:

First, at 10 a.m. we will tour the Palm Springs Heritage Center which is comprised of two 19th century pioneer homes and includes historic photos, clothing, books, hotel memorabilia, pioneer tools and Indian artifacts. This tour will last approximately one and one-half hours and has a nominal admission fee. We then have time for lunch at a local restaurant before we proceed to the second part of the tour.

At 1:30 p.m. the afternoon part of the tour will take us to the Palm Desert Historical Society located in the Old Palm Desert Firehouse. Historical photos, newspaper and magazine articles and oral histories of early settlers will enable us to explore the early beginnings of this world-class destination resort. There is no charge for this tour.



Reservations for this field trip are required.

Please contact Marcia Donnell at 951-659-0197 by **March 16** for a reservation.

There will be a car pool, which will leave the Totem at 8:30 a.m.

Monday, May 23

A tour to the Desert Queen Ranch in Joshua Tree National Park has been scheduled for history buffs as well as rock climbers. The Ranch, known as a "Gem in the National Park system," is closed to public access to protect its historic character and is open only to a National Park sponsored walking tour.



A one and one-half hour guided tour will show us original buildings where a family lived for over 50 years. The site of the Desert Queen Ranch has a history dating back to the settlements of the Cahuilla and Serrano peoples up to the mining activities of the late 19th century.

Two separate tours, 10 a.m. and 1 p.m., are scheduled and each tour is limited to 25 people. **The cost of the tour is \$5 per person plus \$10 per vehicle.**

A rock-climbing event is planned after lunch. If you are interested in joining the group of rock climbers, please make a reservation for the 10 a.m. tour and contact Tom and Liz Wirt at 951-659-9688 to confirm your participation in this climb.

The second tour will begin at 1:00 p.m. Plan to bring a picnic lunch and wear appropriate clothing and shoes.

Reservations for the tour are required.

Please contact Marcia Donnell at 951-659-0197 no later than **April 18** to reserve space.

A car pool for the 10 a.m. tour will leave the Totem at 8:00 a.m.

A second car pool for the 1 p.m. tour will leave the Totem at 10:30 a.m.

Two new exhibits have been created from the archives of the Historical Society and are available for viewing now.

- ◆ *A collection of photographs of Lake Hemet Dam is being shown at the Mountain Center Post Office located at the intersection of Highways 243 and 79.*
- ◆ *Early cabin cookware, some donated by IAHS members, is on display at the Nature Center located on Highway 243 between Idyllwild and Pine Cove.*

Meet the 2005 Board of Directors

Vice President, Carolyn Levitski

Carolyn has been coming to Idyllwild since 1979. She and husband Richard bought a cabin in Dutch Flats and moved into it full time in 2002 after her retirement from Cypress School District where she had been a classroom teacher then district staff developer for 36 years.

Carolyn has been a member of the Society since its inception and instrumental in the renovation of the museum and retrofitting of the office buildings. She is the resident photographer for the Society, video tapes the oral history projects and has developed the computerized slide show for the museum.

Carolyn believes the Society is a wonderful addition to the community and provides exhibits to the public that document Idyllwild beginnings and tell the human stories.

Treasurer, Bob Smith

Bob is a three year full time resident of Idyllwild after taking annual vacations in Pinewood since 1939. He and Adele retired here from Utah where he was a chemistry professor and university administrator—the last 16 years as academic vice president and provost at Weber State University, Ogden, Utah.

Bob has an interest in Fuller's Mill and surroundings and when the IAHS appeared it seemed a logical group to associate with and form contacts for historical information. In addition to serving as treasurer Bob is a researcher, archivist, docent, computer jockey, writer and editor.

Bob sees the need to attract human and monetary resources to match our growth as important issues.

Secretary, Marcia Donnell

Marcia was in the process of looking for a retirement home when a chance viewing of Huell Howser's television program on the IAHS sparked an interest in a trip to Idyllwild. An interview with curator Lynnda Hart clinched the deal when Marcia learned of the many activities and volunteered opportunities available in the community.

A resident since May 2004, Marcia brings a variety of professional and volunteer experiences to IAHS, the most recent as a member of the Dayton Historic Depot Society in Washington state where she served as president for five years. Currently, Marcia serves as newsletter editor and volunteers wherever a need arises.

Community outreach programs and publicity to raise the public awareness of and interest in the museum are areas of importance to Marcia.

Museum Director and Curator, Lynnda Hart.

Lynnda grew up in Palm Springs and first came to Pine Cove in 1944 to visit a friend. She remembers hiking down through the forest to Logan Creek to fetch water.

She and husband Don have owned property in Pine Cove since 1957. Lynnda has had her own design business for 42 years and specializes in remodels and interior design work.

A member of the Society since day one, Lynnda believes in making certain the history of the Idyllwild area is preserved and shared in such a way to promote interest and long-term respect for our mountain.

Lynnda is responsible for the many hours of archival work to preserve artifacts donated to the museum and has designed and created the many exhibits in the museum and other locations.

Director, Charlene Chindlund

Charlene is a newcomer both to Idyllwild and to IAHS. She and her husband, Bill, moved here as "full-timers" last June. Charlene retired from the California Institute of Technology after 23 years of service where her major responsibilities involved the Office of Stewardship and Donor Events and fundraising.

She credits her good fortune that she was able to work with amazing students, scientists and alumni. Charlene currently serves on the IAHS Audit Committee and sees the need for a long-term goal of creating an endowment to ensure the future of the museum.

Director, Joe Hart

Joe has been coming to Idyllwild since 1940 while living in Hemet where his father was a flight instructor for the Army Air Corps at Ryan Field.

Joe is a "part-timer" with his primary residence being in Carlsbad, CA, and he is the owner and winemaker of Hart Winery in Temecula.

Joe is active in the Society as a docent, archival assistant, and membership committee and currently serves as chairman for the new storage facility committee.

Joe views collecting oral histories, expanding our collections, maintaining a viable and dedicated board, and enhancing community outreach as important issues.

Director, Nanci Killingsworth

Nanci has been coming to Idyllwild since she was a child and remembers her family renting a number of cabins

Continued on page 5

Directors Continued

including where the Prairie Dove is now located as well as facilities at the Idyllwild Inn. She and husband Ben have been residents for three years.

Nanci has been a member of IAHS for one year and has been associated with the San Diego Historical Society. A docent with the Cabin Club, Nanci is also president of Rotary Anns.

A program to increase the awareness of the museum, increasing membership, and expanding the museum gift shop are areas of importance to Nanci.

Director, Adele Voell

It had been a dream of the Voells to retire in Idyllwild when they bought a cabin in 1970. Early in 1997 Adele and her husband retired from Ross Perot's company in Plano, Texas, and moved into their remodeled cabin.

Adele became interested in IAHS as a result of her interest in the history of Idyllwild and a desire to see that the history was not "lost." Adele volunteers as a docent at the museum, is the volunteer coordinator for the Friends of the Library, and very active at St. Hugh Episcopal Church.

Adele sees insuring the preservation of Idyllwild history and making it available to the public as important to the success of the museum.

Director, Lynn Voorheis

Currently, Lynn is Museum Curator of Historic Structures and Collections at the Riverside Municipal Museum. She is responsible for the National Historic Landmark site, Harada House, and the National Register site, Heritage House.

Lynn graduated from the Masters in Arts Winterthur Program in Early American Material Culture (Winterthur Museum/University of Delaware) and is fortunate to have worked at a variety of museums—the Mutter Museum College of Physicians of Philadelphia, Hillwood Museum and Gardens and the Mission Inn Foundation and Museum.

Lynn is a four year resident of Idyllwild and is IAHS chairman for the Collections Committee.

Lynn believes we need to maintain an ability to grow and develop while remaining financially secure and to look for new ways to expand our knowledge as a museum.

Look for Bios of Rita Caldwell, Kay Cenicerros, and Shirl Reid in future issues of Arti-facts.

Docent Recognition

A "Soup and Speaker" luncheon was held on February 10, 2005, at the Silver Pines Lodge in Idyllwild to honor members of the Cabin Club, the docents who work so diligently to keep the museum open and in the forefront of community activities.

Twenty-five guests enjoyed hot potato soup, crispy bread and delicious desserts prepared by Docent Coordinator Mary Austin, Sue Miller, and Elaine Rahmann and listened to program speaker Pat Boss who related the history of the Forest Service.

A history of the Silver Pines Lodge was presented by museum curator, Lynn Hart. The luncheon provided a forum for docent feedback on the views of museum visitors as well as an opportunity to meet and exchange ideas with other docents.



Photo by Carolyn Levitski

Sue Miller serves soup to appreciative Richard Levitski and Don Hart

Annual Meeting

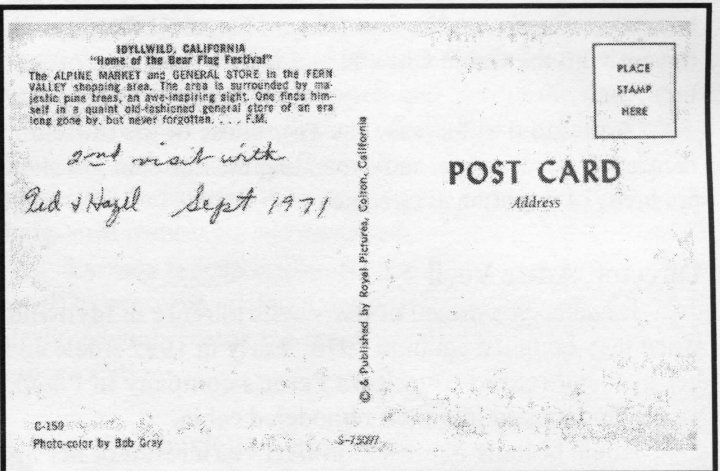


2004 IAHS Vice-President/Treasurer Bob Smith, who served as Master of Ceremonies at the Annual Meeting last December, is shown welcoming Carolyn Levitski as the in-coming Vice President for 2005.

Postcards from the Past

The postcards appearing in this edition of the newsletter are but a tiny fraction of the postcards donated to our collection. Some of the postcards were commercially produced while others were reproduced in early days from family albums.

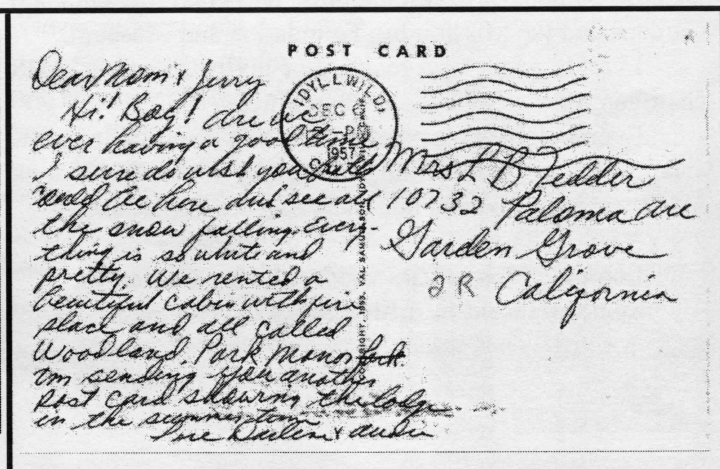
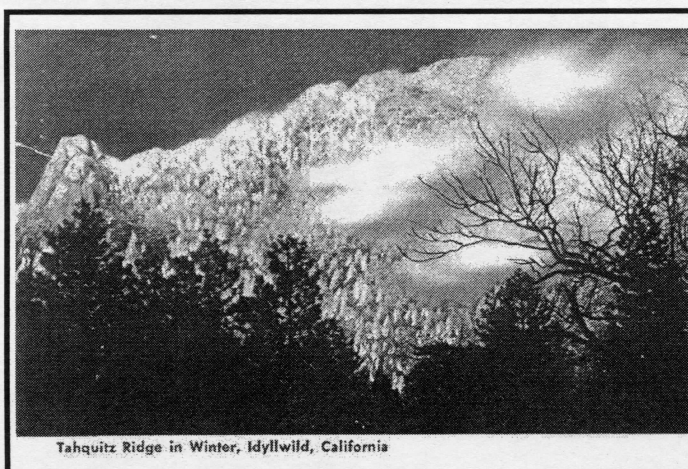
Cedar Creek Inn, 1960's



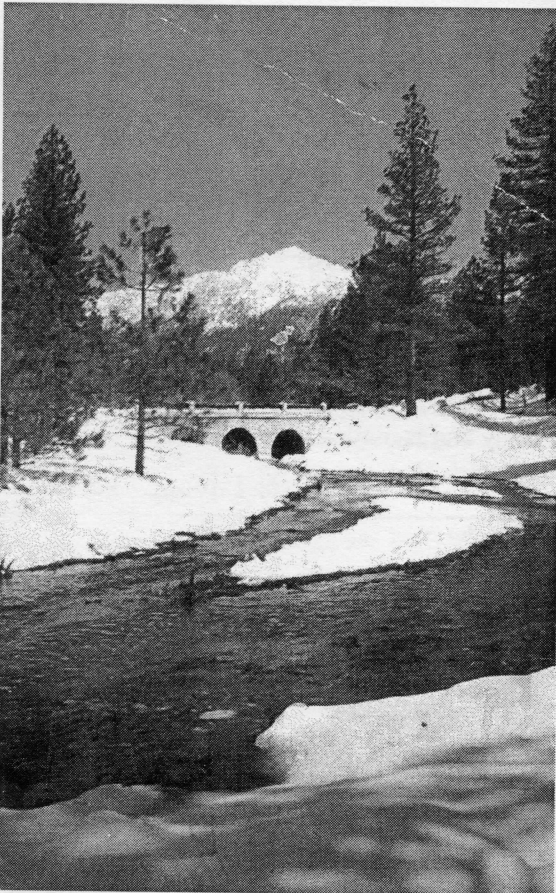
Jan's Red Kettle, 1930's



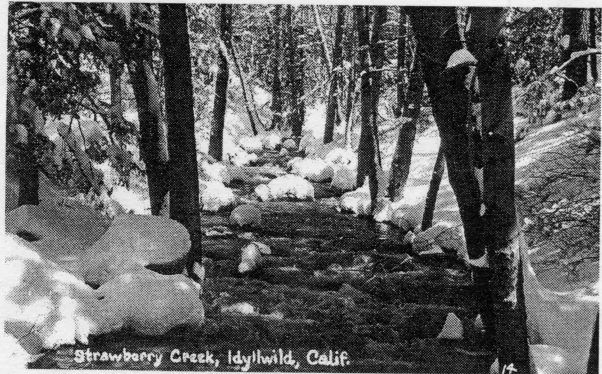
Tahquitz Ridge, 1950's



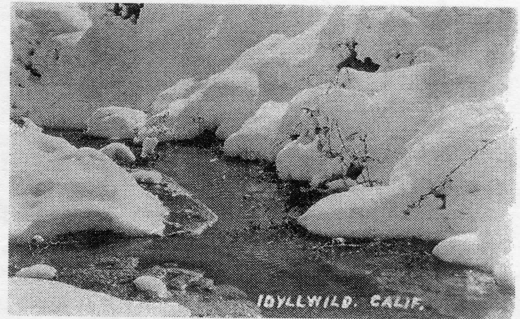
Postcards from the Past



Can you identify the locations for these two photos?
Drop us a postcard at P.O. Box 3320 with your
answer. The first four postcards with the correct
answer will receive a prize!



Strawberry Creek circa 1945-1950



Idyllwild, California circa late 1920's

Membership Update

Welcome to our new members since the last newsletter. We look forward to seeing you at our gatherings and on our field trips. Your support is greatly appreciated!

Individual Memberships:

Nancy Jones, San Diego
Stephen and Noreen Hudson, Palm Desert
Walt and Liz Mueller, San Diego
Fred and Sally La Berteaux, Calimesa
Robert Hewitt, Temple City
Dr. and Mrs. Burdette Nelson, Julian
Nancy Fletcher, San Diego
Norma Brandel Gibbs, Huntington Beach
Nancy Condon, Lodi (corrected spelling)
Ed and Carole Stavert, Los Angeles
Grace T. Leonard, Palos Verdes Estates

Business Memberships:

Elda Ulmer, La Vie en Rose Restaurant, Idyllwild

Membership Information

Join IAHS or Give a Gift Membership and Receive

- **Arti-facts** Newsletter
- Field Trips
- Gatherings
- Volunteer Opportunities
- Support of Historical Research, collection and documentation of photos and artifacts
- Support for the Idyllwild Area Museum
- 10% discount in Museum Shop

Won't You Join Us? , , , , , Send Your Annual Membership to:

Name(s) _____

Address _____

Email Address _____ Telephone: _____

Gift card from _____

- \$15 Individual
 - \$25 Family
 - \$35 Contributing
 - \$100 Sponsor
 - \$500 Patron
 - \$1000 Founder's Circle:
 - \$35 Business
 - \$750 Corporate
- Lifetime membership and plaque in museum
Installment plan available - \$100/year for 10 years**

Send this membership form and check to:

Idyllwild Area Historical Society, PO Box 3320, Idyllwild, CA 92549 • (951) 659-2717

- We appreciate your support -

All dues and contributions are tax deductible.

Idyllwild Area Historical Society, PO Box 3320, Idyllwild, CA 92549 • (951) 659-2717

Museum: 54470 North Circle Drive, Idyllwild, CA 92549

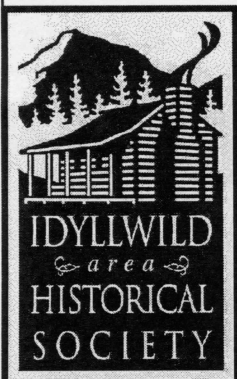
Website: www.IdyllwildAreaHistoricalSociety.org

Arti-facts, the official newsletter, appears quarterly and is mailed to all members

Newsletter Editor - Marcia Donnell

Newsletter Layout - Terry Casella

PO Box 3320
Idyllwild, CA 92549



Non-profit
Organization
U.S. Postage
PAID
Idyllwild, CA
Permit No. 3320